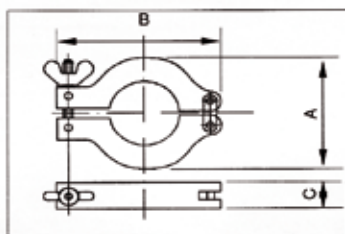


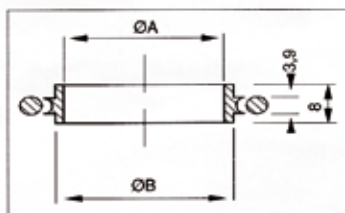
## Raccords type «Pneurop»

Collier de serrage



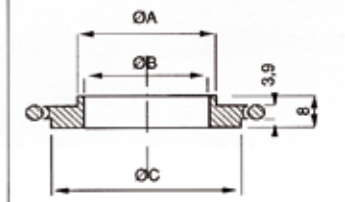
Matériau	Ø nominal	A	B	C	Réf.
Zamac	DN 10-16	45	62	16	100 101
	DN 20-25	55	73	16	100 102
	DN 32-40	70	90	16	100 103
	DN 50	95	123	25	100 104

Anneau de centrage avec joint



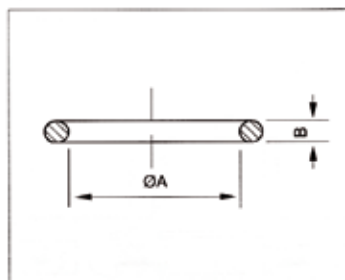
Inox Perbunan	DN 10	10	12		100 111
	DN 16	16	17		100 112
	DN 20	21	22		100 113
	DN 25	25	26		100 114
	DN 32	32	34		100 115
	DN 40	40	41		100 116
DN 50	50	52		100 117	

Anneau de centrage réducteur avec joint



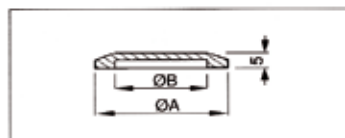
Inox Viton	DN 10	10	12		100 121
	DN 16	16	17		100 122
	DN 20	21	22		100 123
	DN 25	25	26		100 124
	DN 32	32	34		100 125
	DN 40	40	41		100 126
DN 50	50	52		100 127	
Inox Perbunan	DN 16/10	10	12	17	100 131
	DN 25/20	21	22	26	100 132
	DN 40/32	32	34	41	100 133
Inox Viton	DN 16/10	10	12	17	100 141
	DN 25/20	21	22	26	100 142
	DN 40/32	32	34	41	100 143

Joint



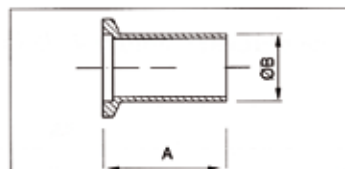
Perbunan	DN 10	15	5		100 151
	DN 16	18	5		100 152
	DN 20	25	5		100 153
	DN 25	28	5		100 154
	DN 32	41,4	5,3		100 155
	DN 40	41,4	5,3		100 156
DN 50	54,5	5,3		100 157	
Viton	DN 10	15	5		100 161
	DN 16	18	5		100 162
	DN 20	25	5		100 163
	DN 25	28	5		100 164
	DN 32	41,4	5,3		100 165
	DN 40	41,4	5,3		100 166
DN 50	54,5	5,3		100 167	

Obturateur



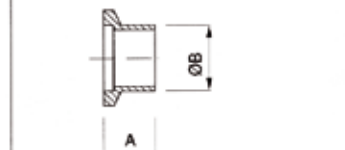
Inox	DN 10	30	12,2		100 181
	DN 16	30	17,2		100 182
	DN 20	40	22,2		100 183
	DN 25	40	26,2		100 184
	DN 32	55	34,2		100 185
	DN 40	55	41,2		100 186
	DN 50	75	52,2		100 187

Embout lisse long



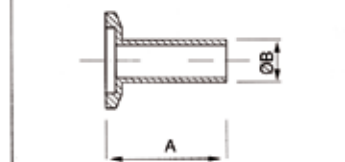
Inox	DN 10	50	14		100 201
	DN 16	50	20		100 202
	DN 20	50	25		100 203
	DN 25	50	28		100 204
	DN 32	50	38		100 205
	DN 40	50	44,5		100 206
	DN 50	50	57		100 207

Embout lisse court



Inox	DN 10	21	14		100 211
	DN 16	21	20		100 212
	DN 20	21	25		100 213
	DN 25	21	28		100 214
	DN 32	21	38		100 215
	DN 40	21	44,5		100 216
	DN 50	21	57		100 217

Embout lisse réducteur



Inox	DN 25/16	50	20		100 221
	DN 40/25	50	28		100 222

