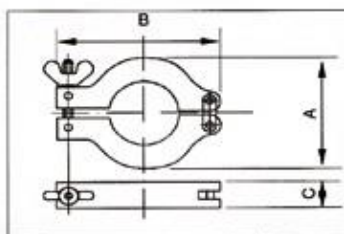


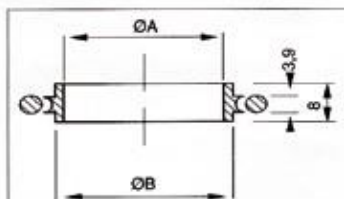
Raccord type « Pneurop » DN10-DN50

| Matériau | Ø nominal | A | B | C | Réf. |
|---------------|-----------|------|------|----|---------|
| Zamac | DN 10-16 | 45 | 62 | 16 | 100 101 |
| | DN 20-25 | 55 | 73 | 16 | 100 102 |
| | DN 32-40 | 70 | 90 | 16 | 100 103 |
| | DN 50 | 95 | 123 | 25 | 100 104 |
| Inox Perbunan | DN 10 | 10 | 12 | | 100 111 |
| | DN 16 | 16 | 17 | | 100 112 |
| | DN 20 | 21 | 22 | | 100 113 |
| | DN 25 | 25 | 26 | | 100 114 |
| | DN 32 | 32 | 34 | | 100 115 |
| | DN 40 | 40 | 41 | | 100 116 |
| | DN 50 | 50 | 52 | | 100 117 |
| Inox Viton | DN 10 | 10 | 12 | | 100 121 |
| | DN 16 | 16 | 17 | | 100 122 |
| | DN 20 | 21 | 22 | | 100 123 |
| | DN 25 | 25 | 26 | | 100 124 |
| | DN 32 | 32 | 34 | | 100 125 |
| | DN 40 | 40 | 41 | | 100 126 |
| | DN 50 | 50 | 52 | | 100 127 |
| Inox Perbunan | DN 16/10 | 10 | 12 | 17 | 100 131 |
| | DN 25/20 | 21 | 22 | 26 | 100 132 |
| | DN 40/32 | 32 | 34 | 41 | 100 133 |
| Inox Viton | DN 16/10 | 10 | 12 | 17 | 100 141 |
| | DN 25/20 | 21 | 22 | 26 | 100 142 |
| | DN 40/32 | 32 | 34 | 41 | 100 143 |
| Perbunan | DN 10 | 15 | 5 | | 100 151 |
| | DN 16 | 18 | 5 | | 100 152 |
| | DN 20 | 25 | 5 | | 100 153 |
| | DN 25 | 28 | 5 | | 100 154 |
| | DN 32 | 41,4 | 5,3 | | 100 156 |
| | DN 40 | 41,4 | 5,3 | | 100 156 |
| | DN 50 | 54,5 | 5,3 | | 100 157 |
| Viton | DN 10 | 15 | 5 | | 100 161 |
| | DN 16 | 18 | 5 | | 100 162 |
| | DN 20 | 25 | 5 | | 100 163 |
| | DN 25 | 28 | 5 | | 100 164 |
| | DN 32 | 41,4 | 5,3 | | 100 165 |
| | DN 40 | 41,4 | 5,3 | | 100 166 |
| | DN 50 | 54,5 | 5,3 | | 100 167 |
| Inox | DN 10 | 30 | 12,2 | | 100 181 |
| | DN 16 | 30 | 17,2 | | 100 182 |
| | DN 20 | 40 | 22,2 | | 100 183 |
| | DN 25 | 40 | 26,2 | | 100 184 |
| | DN 32 | 55 | 34,2 | | 100 185 |
| | DN 40 | 55 | 41,2 | | 100 186 |
| | DN 50 | 75 | 52,2 | | 100 187 |
| Inox | DN 10 | 50 | 14 | | 100 201 |
| | DN 16 | 50 | 20 | | 100 202 |
| | DN 20 | 50 | 25 | | 100 203 |
| | DN 25 | 50 | 28 | | 100 204 |
| | DN 32 | 50 | 38 | | 100 205 |
| | DN 40 | 50 | 44,5 | | 100 206 |
| | DN 50 | 50 | 57 | | 100 207 |
| Inox | DN 10 | 21 | 14 | | 100 211 |
| | DN 16 | 21 | 20 | | 100 212 |
| | DN 20 | 21 | 25 | | 100 213 |
| | DN 25 | 21 | 28 | | 100 214 |
| | DN 32 | 21 | 38 | | 100 215 |
| | DN 40 | 21 | 44,5 | | 100 216 |
| | DN 50 | 21 | 57 | | 100 217 |
| Inox | DN 25/16 | 50 | 20 | | 100 221 |
| | DN 40/25 | 50 | 28 | | 100 222 |

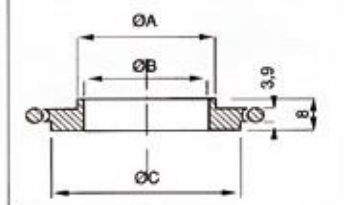
Collier de serrage



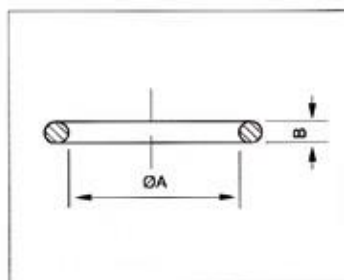
Anneau de centrage avec joint



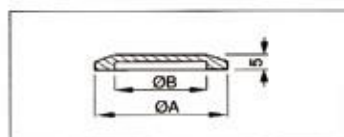
Anneau de centrage réducteur avec joint



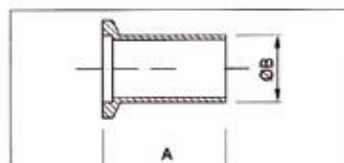
Joint



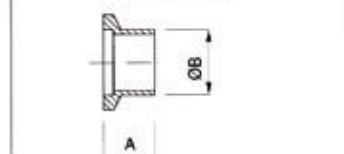
Obturateur



Embout lisse long



Embout lisse court



Embout lisse réducteur

